



POINT MOBILE CO., LTD.
B-9F Kabul Great Vally, 60-5, Gasan-dong
Geumcheon-gu, Seoul, Korea 153-709

SDK Install and Test Guide

Contains Information proprietary to
PointMobile

Pointmobile Confidential Proprietary
Printed copies of this document are uncontrolled, unless stamped "Control Copy" in red on all pages, or
otherwise identified as a controlled copy according to site's normal method

Created by POINTMOBILE





<i>Revision History</i>			
		<i>Date</i>	<i>Auth.</i>
<i>1.0</i>	<i>Initial Draft</i>	<i>3/2/12</i>	<i>Samuel</i>



Section 1: Prerequisites

TOOLS required

- Visual studio 2008
- Windows Installer 3.0 or later

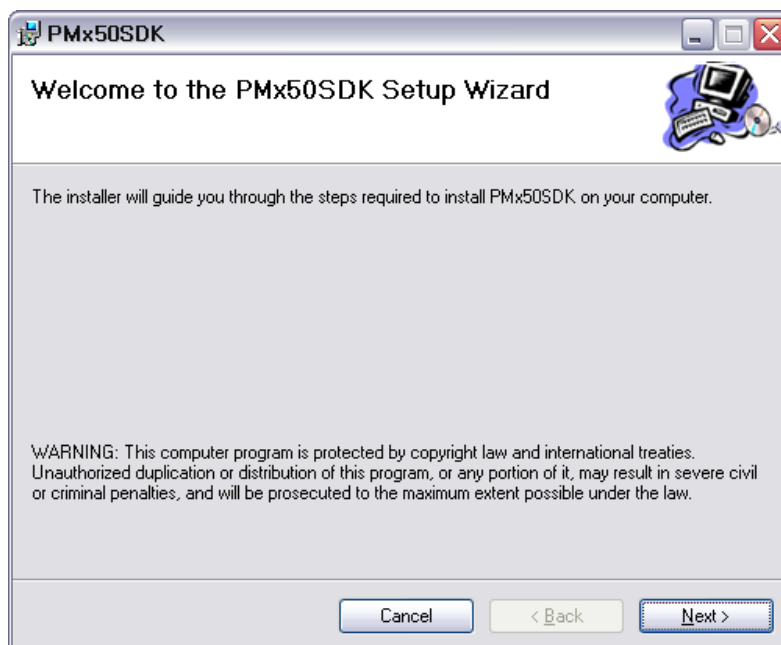
Check SDK version

- A. Need the latest SDK version
Ex) PM250SDK_vx.x.msi

Section 2: SDK Install

Install SDK

- A. Setup wizard
■ Click next

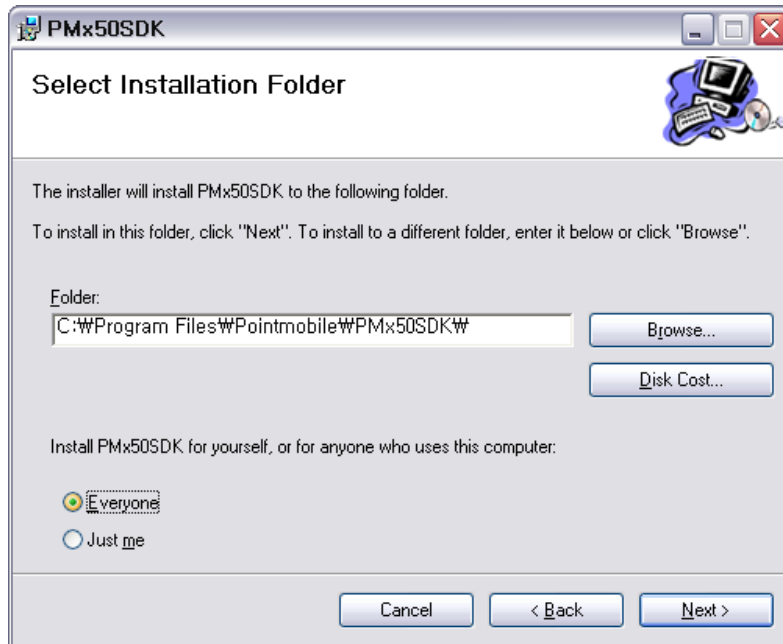


Pointmobile Confidential Proprietary

Printed copies of this document are uncontrolled, unless stamped "Control Copy" in red on all pages, or otherwise identified as a controlled copy according to site's normal method

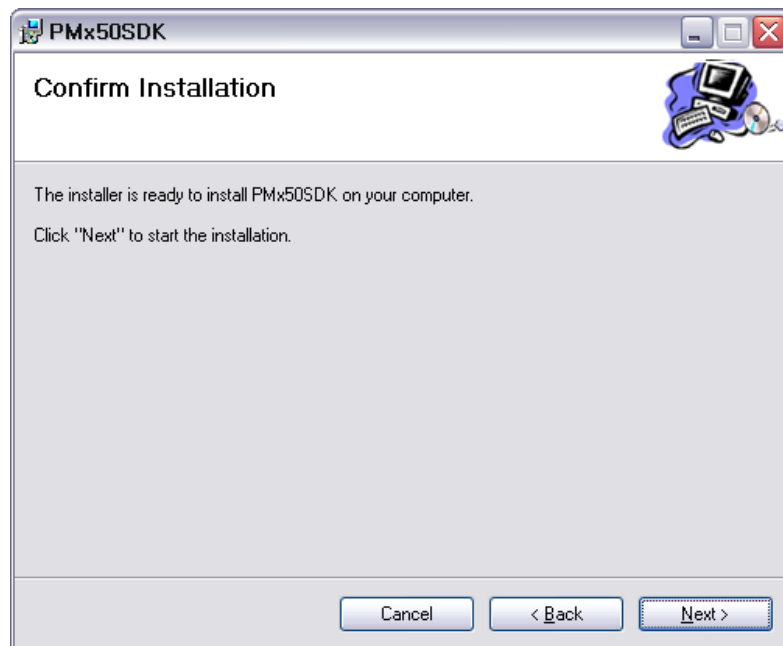
B. Select installation folder

- default folder : \Program Files\ Pointmobile\xxxSDK\
■ Click Next



C. Confirm Installation

- Check the installed version lastly.
■ Click Next

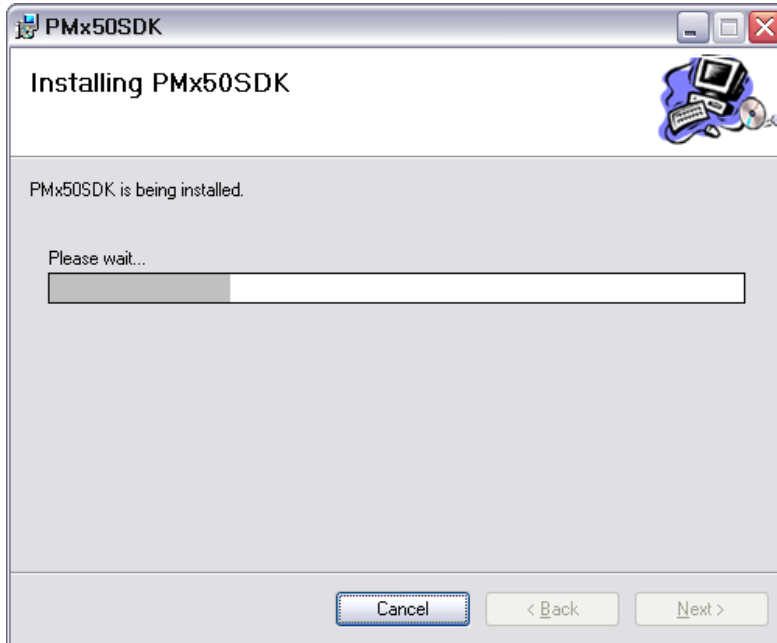


Pointmobile Confidential Proprietary

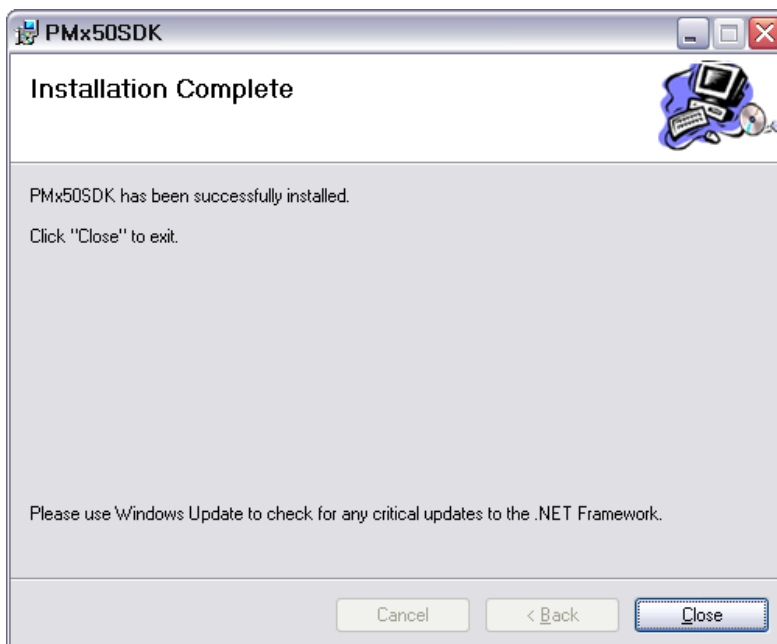
Printed copies of this document are uncontrolled, unless stamped "Control Copy" in red on all pages, or otherwise identified as a controlled copy according to site's normal method

D. Installing

- Wait for install procedure is finished completely.



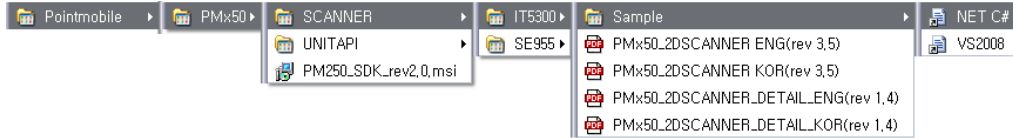
E. Installation Complete



Check installed files

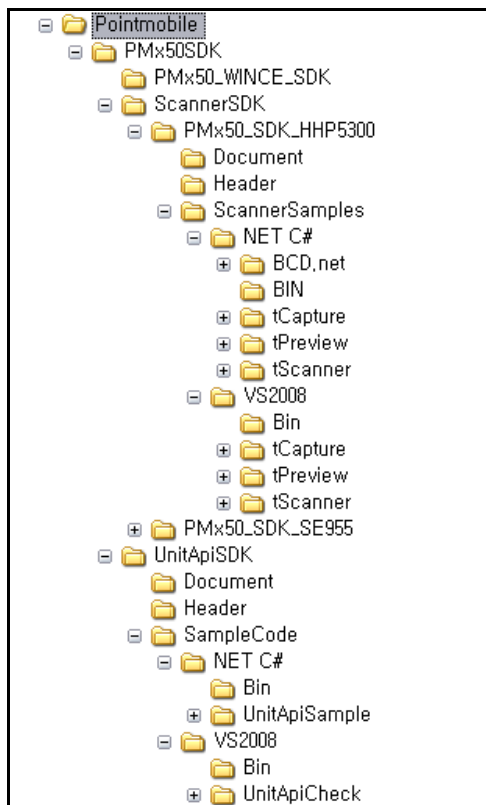
A. Check below links are created

- Start -> All Programs -> Pointmobile



B. Check the required files are installed correctly.

- Ex) \Program Files\ Pointmobile\PMx50SDK



Pointmobile Confidential Proprietary

Printed copies of this document are uncontrolled, unless stamped "Control Copy" in red on all pages, or otherwise identified as a controlled copy according to site's normal method



Section 3: WINCE SDK Install

Start to install WINCE SDK

A. Start to install WINCE SDK using below link

- Ex) Start -> All Programs -> Pointmobile -> PM100 -> PM100_WINCE_SDK

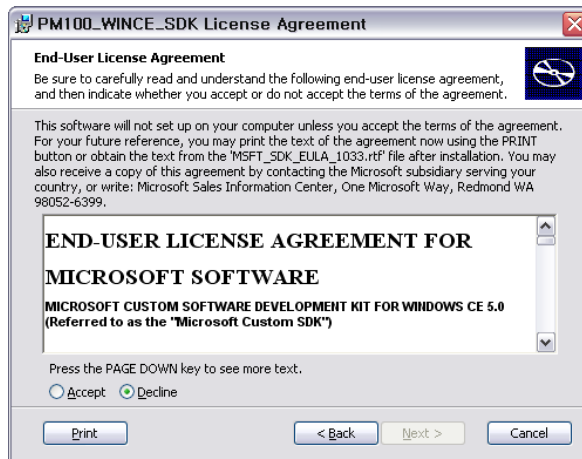
B. WINCE SDK Setup Wizard

- Click Next



C. User License Agreement

- Select Accept
- Click Next

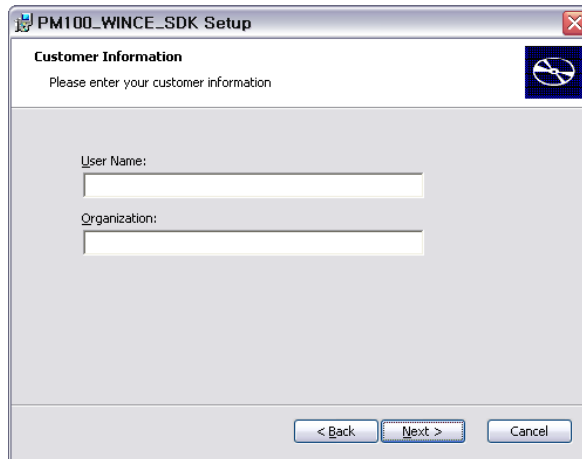


D. Customer Information

- Input User Name and Organization
- Click Next

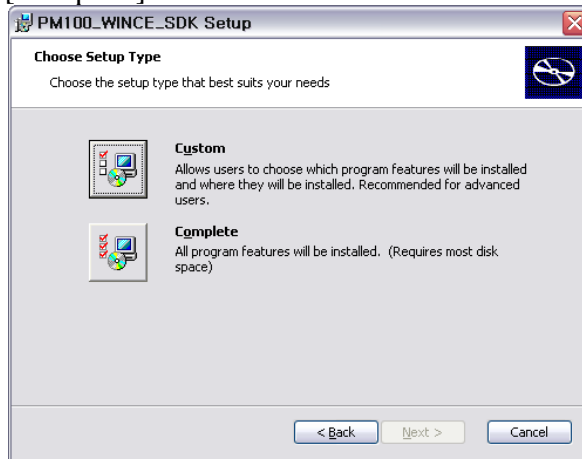
Pointmobile Confidential Proprietary

Printed copies of this document are uncontrolled, unless stamped "Control Copy" in red on all pages, or otherwise identified as a controlled copy according to site's normal method



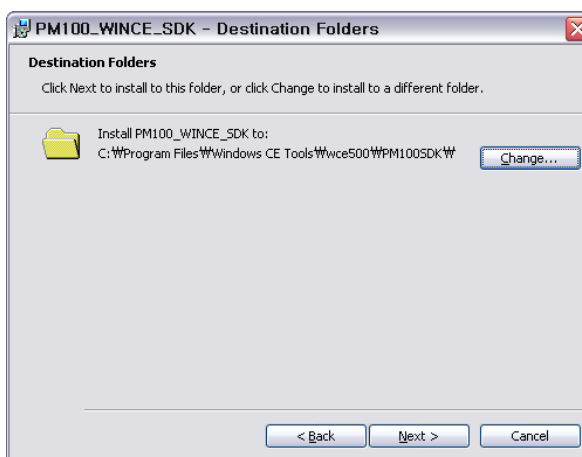
E. Choose Setup type

- Click button [Complete]



F. Destination Folders

- Default folder : [\\Program Files\\Windows CE Tools\\wce500\\PM100SDK]
- Click Next



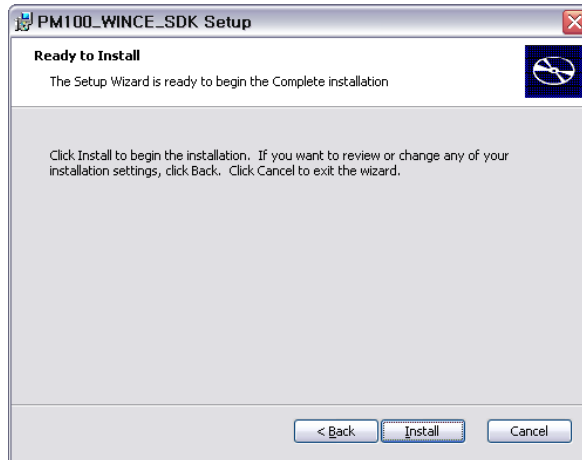
G. Destination Folders

Pointmobile Confidential Proprietary

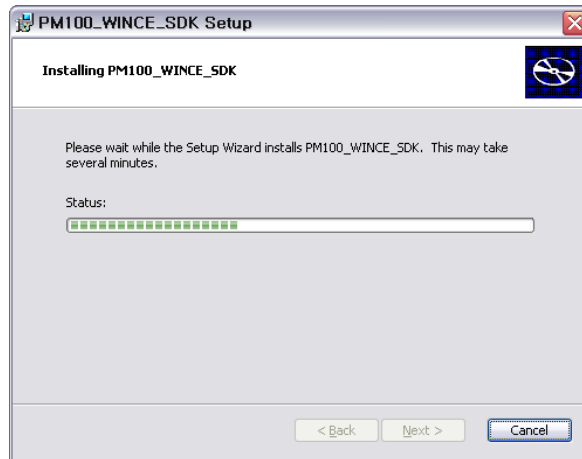
Printed copies of this document are uncontrolled, unless stamped "Control Copy" in red on all pages, or otherwise identified as a controlled copy according to site's normal method



■ Click Install

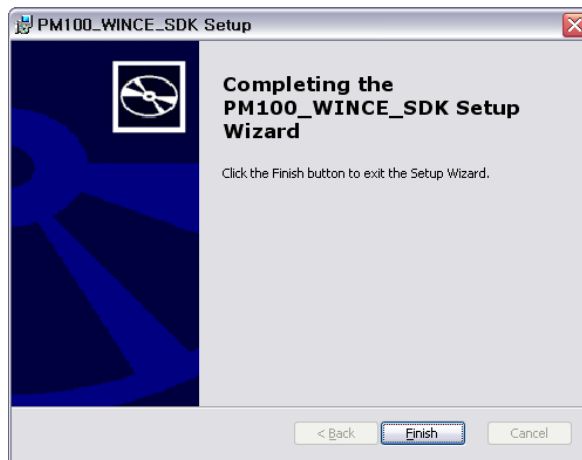


H. Installing SDK



I. Complete setup wizard

■ Click Finish



Section 4: How to open Sample project

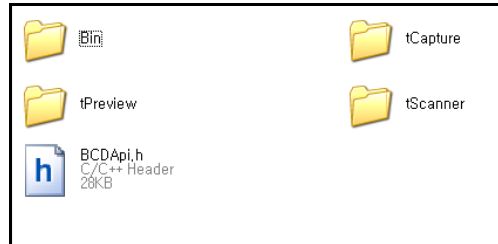
Scanner tCapture Project

A. Using below link

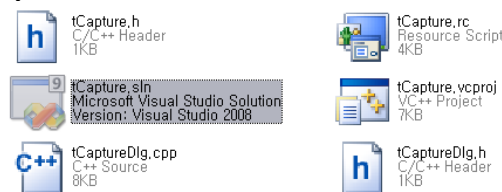
■ Ex) Start -> All Programs -> Pointmobile -> PM100 -> Scanner -> Sample

■ VS2008[C++]

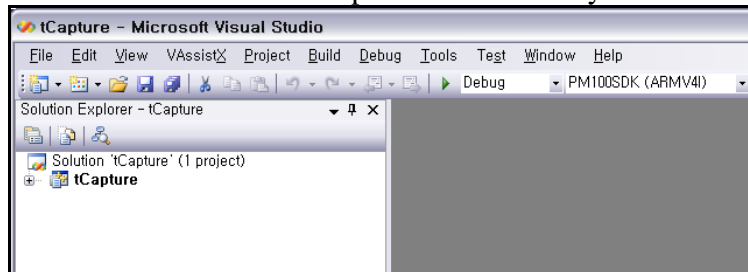
◆ Click tCapture folder



◆ Click tCapture.sln



◆ Visual Studio 2008 will be opened automatically



◆ Compile

● Build -> Build Solution or F7 click.

● OUTPUT : check all build process is done without error and warning

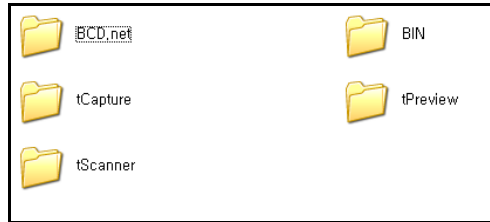
```
Show output from: Build
1>----- Build started: Project: tCapture, Configuration: Debug PM100SDK (ARMV4I) -----
1>Compiling...
1>stdafx.cpp
1>_CE_ACTIVEX was not defined because this Windows CE SDK does not have DCOM.
1> _CE_ACTIVEX could be caused to be defined by defining _CE_ALLOW_SINGLE_THREADED_OBJECTS_
1>_ATL_NO_HOSTING was defined because _CE_ACTIVEX was not defined.
1>Compiling...
1>tCapture.cpp
1>tCaptureDlg.cpp
1>Generating Code...
1>Compiling resources...
1>Microsoft (R) Windows (R) Resource Compiler Version 6.0.5724.0
1>Copyright (C) Microsoft Corporation. All rights reserved.
1>Linking...
1>Build log was saved at "file://c:/Program Files/Pointmobile/PM100SDK/ScannerSDK/ScannerSa
1>tCapture - 0 error(s), 0 warning(s)
===== Build: 1 succeeded, 0 failed, 0 up-to-date, 0 skipped =====
```

Pointmobile Confidential Proprietary

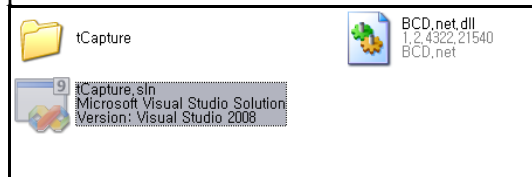
Printed copies of this document are uncontrolled, unless stamped "Control Copy" in red on all pages, or otherwise identified as a controlled copy according to site's normal method

■ NET C#

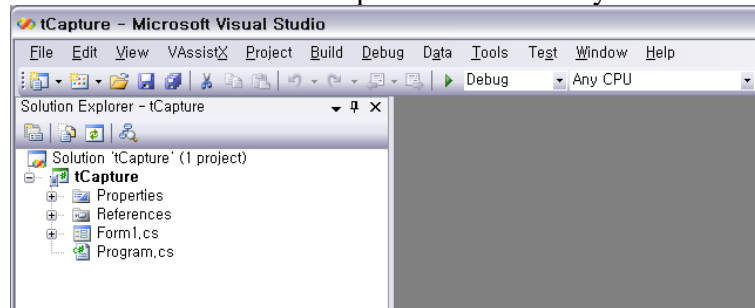
- ◆ Click tCapture folder



- ◆ Click tCapture.sln



- ◆ Visual Studio 2008 will be opened automatically



- ◆ Compile

- Build -> Build Solution or F7 click.
- OUTPUT : check all build process is done without error and warning

